

S34 不锈钢轻型

STAINLESS STEEL LIGHT DUTY

载重 Load
70-90kg



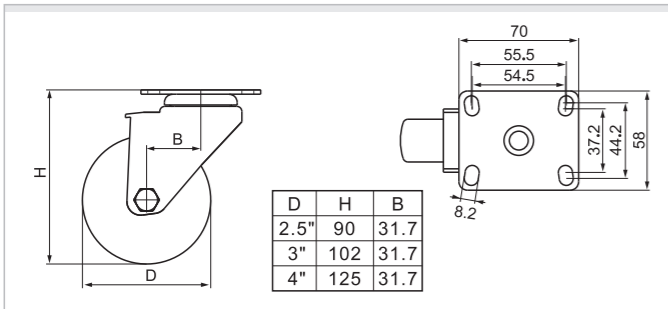
脚架说明 Frame Instruction

- 材料: 不锈钢304 方板厚: 2.5mm 支架厚: 2mm
Material: 304# stainless steel Plate thickness: 2.5mm Bracket thickness: 2mm
- 螺丝孔: $\phi 8$ mm
Screw hole: $\phi 8$ mm
- 支架宽度: 33mm
Bracket width: 33mm

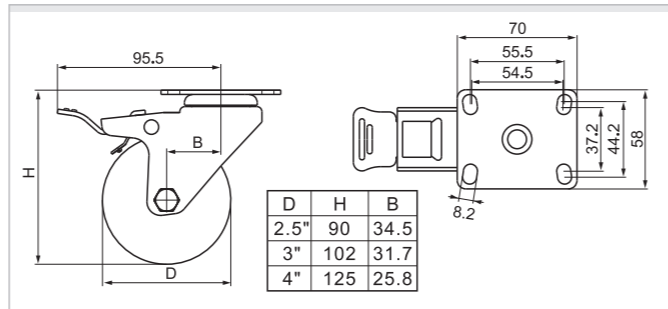
轴承说明 Bearing Instruction

轴承型号 Bearing Type	材质 Material	D	d	H
6000	SUS 440C	26	10	8

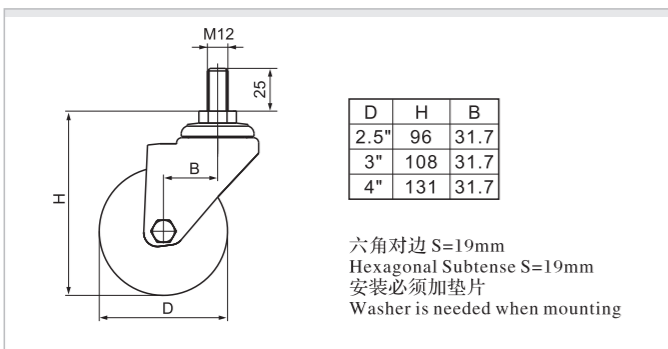
平顶万向安装尺寸图 Plate Swivel Mounting Instruction



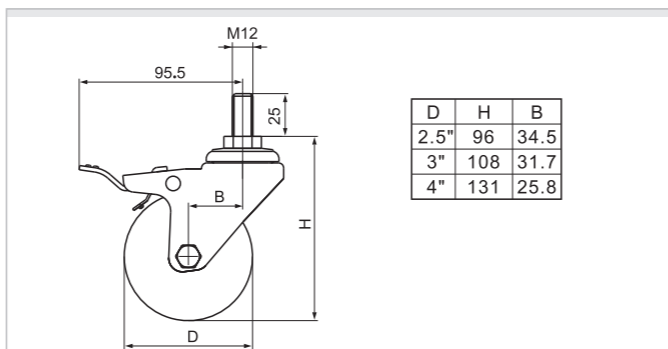
平顶刹车安装尺寸图 Plate Brake Mounting Instruction



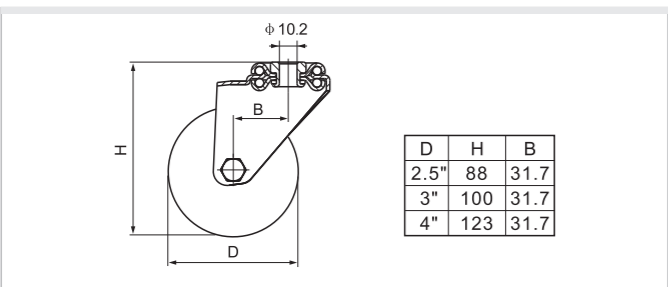
丝口万向安装尺寸图 Threaded Swivel Mounting Instruction



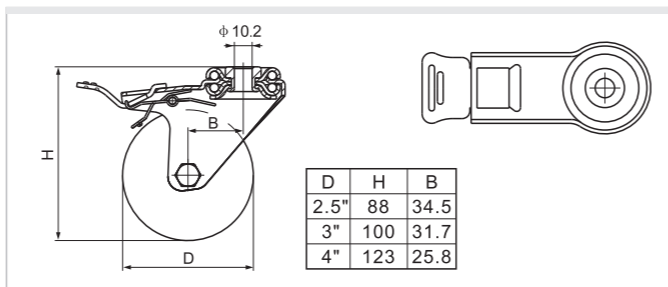
丝口刹车安装尺寸图 Threaded Brake Mounting Instruction



空颈万向安装尺寸图 Bolt hole Swivel Mounting Instruction



空颈刹车安装尺寸图 Bolt hole Brake Mounting Instruction



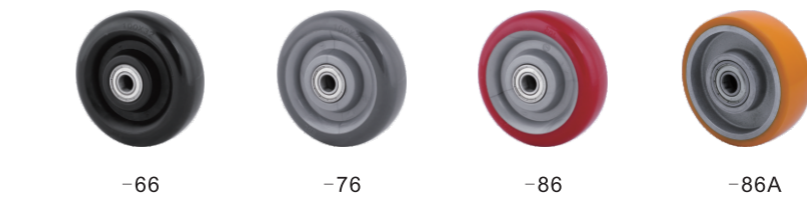
脚架货号说明 Frame Item No. Instruction

规格 Size	定向 Rigid	平顶万向 Plate Swivel	平顶刹车 Plate Brake	丝口万向 Threaded Swivel	丝口刹车 Threaded Brake	空颈万向 Bolt Hole Swivel	空颈刹车 Bolt Hole Brake	刹车示意图 Brake Instruction
2.5"	S347025	S347125	S347225	S347325	S347425	S347725	S347825	 L-铁双刹 Iron Dual Brake
3"	S34703	S34713	S34723	S34733	S34743	S34773	S34783	
4"	S34704	S34714	S34724	S34734	S34744	S34774	S34784	

标配轮子货号说明 Wheel Item No. Instruction

图片 Photo	轮子货号 Wheel item no.	规格 Size	芯子材料 Core	胎面材料 Tread	滚动轴承 Bearing	适用温度 Applicable temperature	胎面硬度 Hardness
	S3325-03	2.5"	63	/	PO 聚烯烃	-20°C~80°C	67D
	S333-03	3"	75				
	S334-03	4"	100				
	S3325-23	2.5"	63	PA 尼龙	螺栓 Bolt	-20°C~120°C	67D
	S333-23	3"	75				
	S334-23	4"	100				
	S3625-64	2.5"	63	PP 聚丙烯	PU 聚氨酯	-20°C~80°C	95A
	S363-64	3"	75				
	S364-64	4"	100				
	S3625-74	2.5"	63	PP 聚丙烯	PU 聚氨酯	-20°C~80°C	95A
	S363-74	3"	75				
	S364-74	4"	100				
	S3625-84	2.5"	63	PP 聚丙烯	TPU 高强度聚氨酯	-20°C~80°C	95A
	S363-84	3"	75				
	S364-84	4"	100				

可选配双轴承轮子 Optional: Double Ball Bearing Wheels



*All metal accessories are made of stainless steel.