

# S71 不锈钢重型

STAINLESS STEEL HEAVY DUTY

载重 Load  
380-450kg

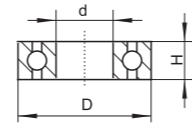


## 脚架说明 Frame Instruction

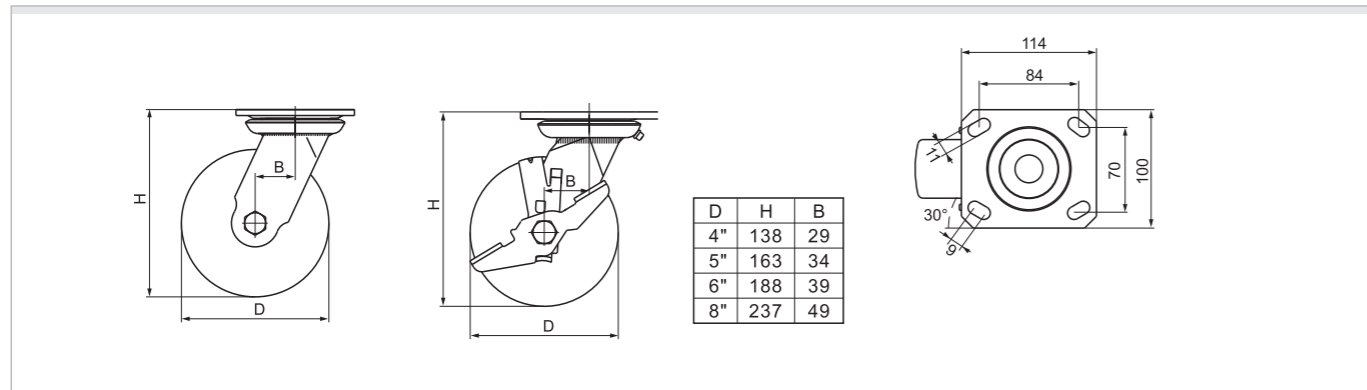
- 材料: 不锈钢304 方板厚: 5mm 支架厚: 5mm  
Material: 304# stainless steel Plate thickness: 5mm Bracket thickness: 5mm
- 螺丝孔:  $\phi 12\text{mm}$   
Screw hole:  $\phi 12\text{mm}$
- 支架宽度: 61mm  
Bracket width: 61mm

## 轴承说明 Bearing Instruction


轴承型号 Bearing Type	材质 Material	D	d	H
6203	SUS 440C	40	17	12




## 平顶安装尺寸图 Plate Mounting Instruction



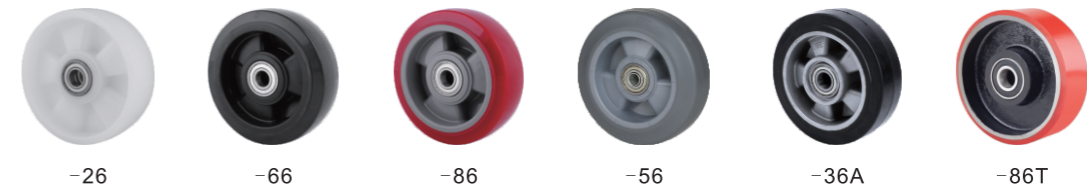
## 脚架货号说明 Frame Item No. Instruction

规格 Size	定向 Rigid	平顶万向 Plate Swivel	平顶刹车 Plate Brake						刹车示意图 Brake Instruction	
4"	S71704	S71714	S71724							 C-侧轮刹 Side Wheel Brake
5"	S71705	S71715	S71725							
6"	S71706	S71716	S71726							
8"	S71708	S71718	S71728							

## 标配轮子货号说明 Wheel Item No. Instruction

图片 Photo	轮子货号 Wheel item no.	规格 Size	100	125	150	200	重量 Kg	芯子材料 Core	胎面材料 Tread	滚动轴承 Bearing	适用温度 Applicable temperature	胎面硬度 Hardness
	S704-25	4"	100				380	/	PA 尼龙	特尔灵 Derlin	-20°C~120°C	67D
	S705-25	5"	125	50	61	400						
	S706-25	6"	150			420						
	S708-25	8"	200			450						
	S704-65	4"	100				320	PP 聚丙烯	PU 聚氨酯	特尔灵 Derlin	-20°C~80°C	95A
	S705-65	5"	125	50	61	350						
	S706-65	6"	150			380						
	S708-65	8"	200			420						
	S704-85	4"	100				350	PP 聚丙烯	TPU 高强度聚氨酯	特尔灵 Derlin	-20°C~80°C	98A
	S705-85	5"	125	50	61	380						
	S706-85	6"	150			420						
	S708-85	8"	200			450						

## 可选配双轴承轮子 Optional: Double Ball Bearing Wheels



\*All metal accessories are made of stainless steel.