

# E37 面包轮

MEDICAL USING LIGHT DUTY

载重 Load  
70-80kg



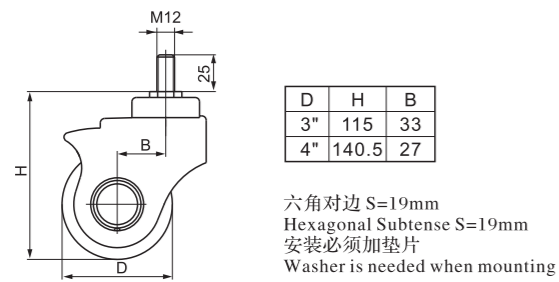
## 脚架说明 Frame Instruction

- 材料: 冷轧板 支架厚: 2mm  
Material: cold-rolled plate Bracket thickness: 2mm
- 螺丝孔:  $\phi 8$ mm  
Screw hole:  $\phi 8$ mm
- 支架宽度: 33mm  
Bracket width: 33mm

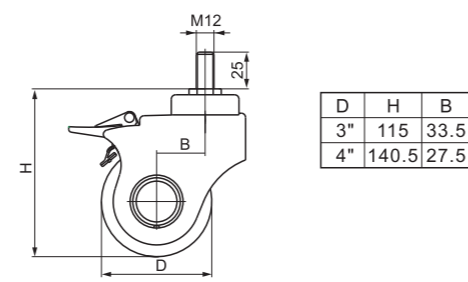
## 轴承说明 Bearing Instruction

轴承型号 Bearing Type	D	d	H
6001	28	12	8

## 丝口万向安装尺寸图 Threaded Swivel Mounting Instruction



## 丝口刹车安装尺寸图 Threaded Brake Mounting Instruction



## 脚架货号说明 Frame Item No. Instruction

规格 Size	丝口万向 Threaded Swivel	丝口刹车 Threaded Brake					刹车示意图 Brake Instruction
3"	E3733	E3743					 H-塑双刹 Plastic Dual Brake
4"	E3734	E3744					

## 标配轮子货号说明 Wheel Item No. Instruction

图片 Photo	轮子货号 Wheel item no.	规格 Size				Kg	芯子材料 Core	胎面材料 Tread	滚动轴承 Bearing	适用温度 Applicable temperature	胎面硬度 Hardness
	373-57	3"	75	25	33	70	PP 聚丙烯	TPE 超级人造胶	单轴承 Single ball bearing 6001	-30°C~70°C	65A
	374-57	4"	100								
	373-77	3"	75	25	33	80	PP 聚丙烯	PU 聚氨酯	单轴承 Single ball bearing 6001	-20°C~80°C	95A
	374-77	4"	100								